

NOTES

Existing conditions information derived from mapping created and provided by Perry Tooker, IV, P.L.S., Professional Land Surveyor, Tooker Land Surveying, PLLC, 220 Park Avenue, Oneida, New York, 315-363-2592.

Martha Lyon Landscape Architecture, LLC makes no claim to the accuracy of the information found on this mapping.

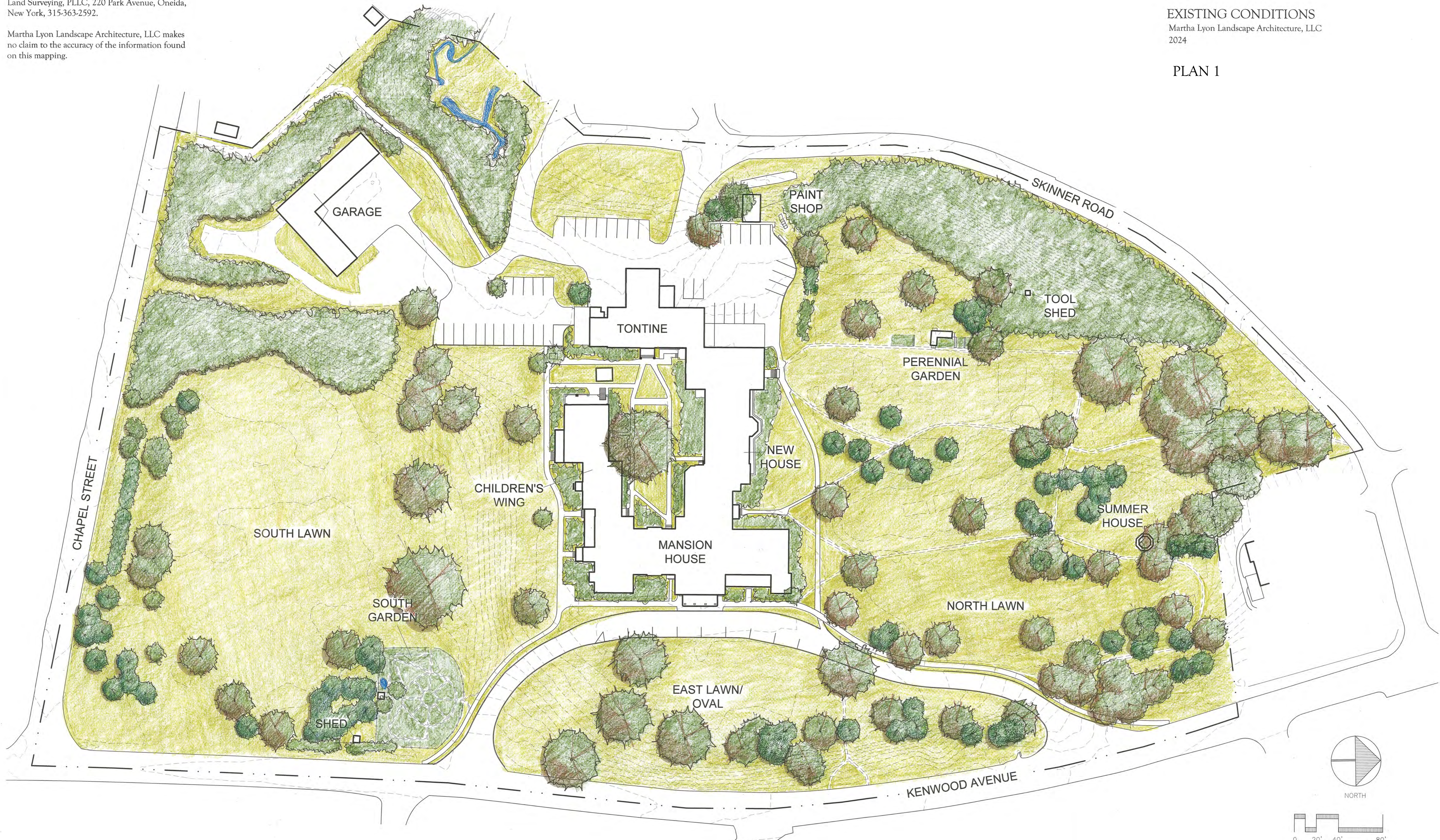
ONEIDA COMMUNITY MANSION HOUSE

Oneida, New York

EXISTING CONDITIONS

Martha Lyon Landscape Architecture, LLC
2024

PLAN 1



NOTES

Existing conditions information derived from mapping created and provided by Perry Tooker, IV, P.L.S., Professional Land Surveyor, Tooker Land Surveying, PLLC, 220 Park Avenue, Oneida, New York, 315-363-2592.

Martha Lyon Landscape Architecture, LLC makes no claim to the accuracy of the information found on this mapping.

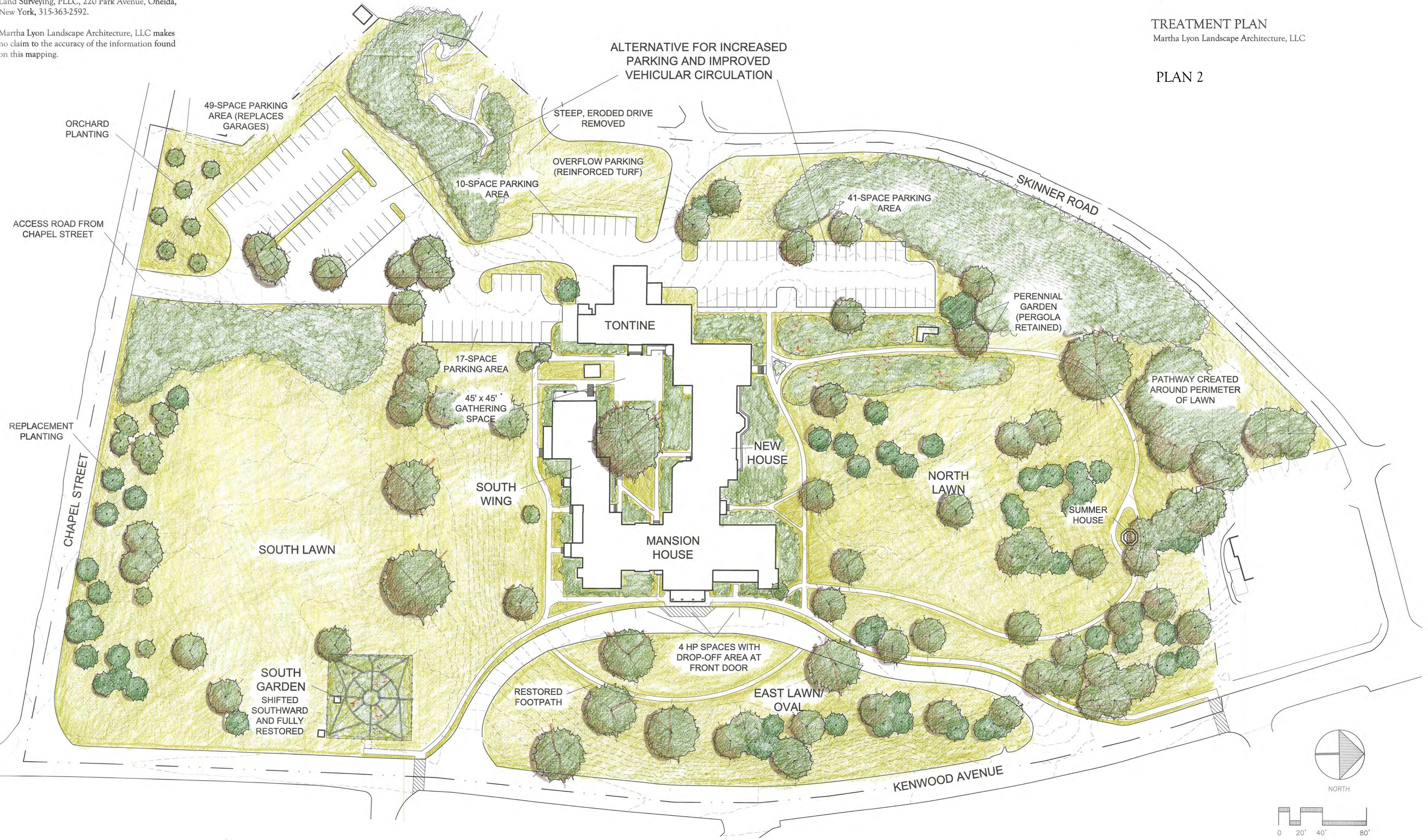
ONEIDA COMMUNITY MANSION HOUSE
CULTURAL LANDSCAPE REPORT

Oneida, New York
2024

TREATMENT PLAN

Martha Lyon Landscape Architecture, LLC

PLAN 2



ALTERNATIVE FOR INCREASED
PARKING AND IMPROVED
VEHICULAR CIRCULATION

STEEP, ERODED DRIVE
REMOVED

OVERFLOW PARKING
(REINFORCED TURF)

49-SPACE PARKING
AREA (REPLACES
GARAGES)

10-SPACE PARKING
AREA

41-SPACE PARKING
AREA

SKINNER ROAD

PERENNIAL
GARDEN
(PERGOLA
RETAINED)

PATHWAY CREATED
AROUND PERIMETER
OF LAWN

TONTINE

17-SPACE
PARKING AREA

45' x 45'
GATHERING
SPACE

NEW
HOUSE

NORTH
LAWN

SUMMER
HOUSE

SOUTH
WING

MANSION
HOUSE

SOUTH LAWN

4 HP SPACES WITH
DROP-OFF AREA AT
FRONT DOOR

RESTORED
FOOTPATH

EAST LAWN/
OVAL

KENWOOD AVENUE

ORCHARD
PLANTING

ACCESS ROAD FROM
CHAPEL STREET

REPLACEMENT
PLANTING

CHAPEL STREET

SOUTH
GARDEN
SHIFTED
SOUTHWARD
AND FULLY
RESTORED

